



Essentials of Orientation™ course

Course Description & Learning Objectives
4 CE available

To register online, go to <http://education.yesinstitute.org/portal>



Clinicians, nurses and health care employees with YES Institute at Children's Diagnostic & Treatment Center, Ft. Lauderdale, FL

This course is one of several offered by YES Institute.
For a complete education catalogue, visit <http://www.yesinstitute.org>
or call our office at **305-663-7195**.

YES Institute – Creating a Safer World for All Youth

OVERVIEW OF COURSE

Essentials of Orientation explores myths and stereotypes about gender, orientation, and identity based on the latest research findings. A professional presentation of suggested clinical strategies and current resources demonstrates ways to make a positive difference for youth and families who may feel isolated and afraid.

This course engages participants in education that begins to dissolve fears and produce actions to protect all youth. Participants will experience open and generous dialogue that can include divergent points of view.



“Your presentation was so on target and made a significant impact on the audience. The speaker’s moving testimonies really hit home. Please come back. The world can benefit from your poignant message.”

- Donald Carson, North Broward Hospital District

This course is particularly useful for people who are working with gay, lesbian, bisexual, and transgender youth and their families. Participants gain access to generating powerful dialogue and creating action plans for a safer community.

“Great! I’ve been working with youth for a long time and have attended many workshops and your skills managed to impress me! Thank you!

- Lisa Lamonica, Miami-Dade County Public School TRUST Counselor



What sets YES Institute apart is our unique approach to education and interaction, based on a communication model that can effectively engage the entire community, by including **all** viewpoints and staying focused on a common purpose of **safety for all youth**.

PRIMARY LEARNING OBJECTIVES

After this course, participants will be able to:

- Distinguish common myths and stereotypes about gender and orientation, and about youth who identify as gay, lesbian, bisexual, or transgender.
- Identify ways to make positive differences for youth and families who may feel isolated and afraid.
- Design and implement action plans that support the safety and well-being of all youth and families in their homes and communities.
- Utilize terminology around gender and orientation that corresponds to the latest research.
- Access community resources to which youth and families can be referred when struggling with concerns around gender and orientation.

INSTRUCTIONAL LEVEL & AUDIENCES

Instructional activity level:

- *Introductory through intermediate:* This course is designed for those with little to no knowledge or familiarity with gender or orientation topics among youth, families, and institutions. Also, those with a moderate amount of experiences can benefit from current literature reviews, deepened understandings, and new and emerging community resources.

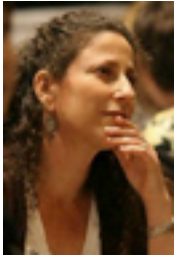
Audiences that regularly attend YES courses include:

- Teachers and school administrators and support staff.
- Mental health counselors and therapists.
- Nursing and other healthcare professionals.
- Parents and family members.
- High school and college students.
- Social service providers working with youth and families.

The Essentials of Orientation course also:

- Reveals connections between harassment, gender, and school violence.
- Explores myths and facts about orientation, gender, and identity using an interactive PowerPoint® presentation.
- Examines how current use of language reinforces biases present in our culture.
- Offers participants a chance to talk about and process fears and questions in an interactive session.
- Demonstrates ways to make a positive difference for youth and families who may feel isolated and afraid.
- Reveals the consequences of silence by sharing real stories from a panel of speakers.
- Provides participants an opportunity to design their own action plans to make a difference for youth in their homes and communities.
- Includes clinical lecture for mental health professionals.

YES INSTITUTE COURSE INSTRUCTORS



Terilee Wunderman, PhD

University of Miami, Adjunct Faculty
Doctor of Philosophy in Counseling Psychology

Dr. Wunderman enlightens audiences with her 20 years of experience and knowledge as a practicing psychologist. Her background in marriage and family therapy, foster care, and adoption provides clinical insights for professionals working with youth and families in a variety of systems of care. Dr. Wunderman has also served and supported clients over the years who have worked through challenges surrounding gender and orientation topics.



Lucian Jude, MA

YES Institute, Director of Communication & Innovation
Florida International University, Master's in Comparative Sociology

Lucian is recognized as a leading educator on gender, working to create new language and understanding that includes gender transitioning in a supportive context. His proven success in opening productive conversations on this topic has established him as a resource for professionals in academic, business, mental health, and nursing communities. Lucian has worked with YES Institute for 5 years.



Brittney Hoffman, MA

YES Institute, Program Coordinator
George Washington Univ., Master's in Women's Studies & Public Policy

Brittney is a stand for youth to feel empowered to express themselves authentically and engage others in acclimatizing environments to be inclusive and supportive of all youth and families. A South Florida native, Brittney has over 5 years of experience working with youth, parents, and educators to keep all youth safe. Brittney is the newest staff member and has worked with YES for over a year.



Joseph Zolobczuk, BPA

YES Institute, Director of Education
University of Miami, Pursuing a Master's in Community & Social Change

Joseph has served the South Florida community for over 13 years with YES Institute. Joseph is recognized in South Florida and throughout the U.S. for his ability to generate productive dialogue where people are divided by conflicting opinions and fears on gender and orientation topics. He has facilitated presentations and workshops for various audiences, including university students, high school teachers and students, healthcare professionals, and religious leaders.

COURSE DATES, REGISTRATION & DETAILS

Course Dates, Times & Fees

For the next available course, visit the YES registration document online:

<http://www.yesinstitute.org/education/register>

Or, call YES staff by phone: 305-663-7195 (Mon-Fri, 9am-5pm)

Course Registration

To register for the course, please do one of the following:

- Register and pay online at: <http://education.yesinstitute.org/portal>
- Print and send by mail or fax registration form: <http://www.yesinstitute.org/education/register>
- Call YES staff register by phone: 305-663-7195 (Mon-Fri, 9am-5pm)

Attendance & Cancellation Policy

- Call YES staff by phone for details: 305-663-7195 (Mon-Fri, 9am-5pm)

Course Duration

This workshop is typically delivered as a four hour (4 hour) course. This course is also divided into smaller portions for special conferences and other clinical purposes.

Availability

This course is offered several times a year at the YES Institute Education Center located in Miami, Florida. This course may be offered live in your area on special dates. If you can secure a group of **10 or more people** and can obtain a training budget or grant opportunity, the YES Institute can conduct a live engagement at an offsite location.

4 CE Credit Hours available



MDCPS Professional Development
Master Plan Points (MPP)
#2-406-302 and
#2-403-003



Florida Board of Nursing and the
Florida Board of Clinical Social Work,
Marriage & Family Therapy, and Mental
Health Counseling - #50-1652 (491)



Miami-Dade College
Faculty Maintenance of Rank
(Contingent upon individual approval)

Licensed professionals who complete the course are eligible for 4 CE credits. YES Institute currently sponsors CE for licensed professionals with the following:

- Miami-Dade County Public Schools, Professional Development, Master Plan Points
- Florida Board of Clinical Social Work, Marriage & Family Therapy, and Mental Health Counseling
- Florida Board of Nursing
- Miami-Dade College faculty (must obtain approval from their supervisor)

For more information and details about CE, please contact YES staff by phone: 305-663-7195 (Mon-Fri, 9am-5pm).